



VIEW TO THE SOUTHWEST



VIEW TO THE NORTHWEST FROM PINOLE VALLEY ROAD

PERSPECTIVE VIEWS (WITH TYPICAL FINISHES)

SCALE: W - 1/4"

5
A201



PROPOSED NORTH EXTERIOR ELEVATION

SCALE: W - 1/4"

1
A201



PROPOSED SOUTH EXTERIOR ELEVATION

SCALE: W - 1/4"

2
A201



PROPOSED EAST EXTERIOR ELEVATION

SCALE: W - 1/4"

3
A201



PROPOSED WEST EXTERIOR ELEVATION

SCALE: W - 1/4"

4
A201

COLOR AND MATERIAL LEGEND

MATERIALS:

- (A) MANUFACTURED STONE VENEER (TO MATCH MARKET)
- (B) SLOPED METAL AWNINGS PAC-CLAD GALVALUME
- (C) FLAT METAL CANOPY
- (D) HOLLOW METAL DOOR
- (E) ALUMINUM STOREFRONT CLEAR ANODIZED ALUMINUM
- (F) GLAZING CLEAR LOW-E 1" INSULATED GLASS
- (G) EXTERIOR PLASTER

COLORS:

- (1) DUNN-EDWARDS PAINTS DE 5363 "TUCATAN"
- (2) DUNN-EDWARDS PAINTS DE 541 "REDWOOD CITY"
- (3) DUNN-EDWARDS PAINTS DE 135 "SOLAR SAND"
- (4) DUNN-EDWARDS PAINTS DE 6264 "RAVE SPRING"
- (5) DUNN-EDWARDS PAINTS DE 6332 "ABSTRACT WHITE"
- (6) DUNN-EDWARDS PAINTS DE 6639 "L'YACI"

GEORGE MEU ASSOCIATES
ARCHITECTURE
PLANNING

499 EMBARCADERO
OAKLAND
CALIFORNIA
94612
PHONE 510 434 9688

DATE: 04/04

20 8/9/07 3/04 8/17/07/08/07 APPLICATION

PROPOSED NEW COMMERCIAL DEVELOPMENT
GATEWAY SHOPPING CENTER
FOR THOMAS GATEWAY, LLC
PINOLE VALLEY ROAD BETWEEN I-40 AND HENRY AVENUE
PINOLE, CALIFORNIA

DESIGNED BY: GEORGE MEU ASSOCIATES

CHECKED BY: GEORGE MEU ASSOCIATES

APPLICANT: THOMAS GATEWAY, LLC

C/O THOMAS PROPERTIES

3100 OAK ROAD, SUITE 100

WALNUT CREEK, CA 94597

SHOPS EXTERIOR ELEVATIONS

A201

GEORGE MEU ASSOCIATES

11/27/07

11/27/07

11/27/07

11/27/07

11/27/07

11/27/07

11/27/07

11/27/07

11/27/07

11/27/07

11/27/07

11/27/07

11/27/07



VIEW TO THE SOUTHWEST



VIEW TO THE SOUTHEAST FROM PINOLE VALLEY ROAD

PERSPECTIVE VIEWS (WITH TYPICAL FINISHES) SCALE: 1/8" = 1'-0" A202

COLOR AND MATERIAL LEGEND

MATERIALS:

- 1 RED CEDAR HORIZONTAL SIDING
- 2 VENEER TILE (APPLY TO GLASS BUILDING)
- 3 METAL SIDINGS
- 4 METAL TUBULAR FINISH
- 5 HOLLOW METAL DOOR
- 6 ALUMINUM STONEFRONT CLEAR ANODIZED ALUMINUM
- 7 GLAZING CLEAR LOW-E (INSULATED) GLASS
- 8 EXTERIOR PLASTER

COLORS:

- 1 CABOT WOOD STAIN #801
- 2 DUNN-EDWARDS PAINTS DE 911 "REDWOOD CITY"
- 3 DUNN-EDWARDS PAINTS DE 926 "GRANDLA"
- 4 DUNN-EDWARDS PAINTS DE 964B "SPRING LEAVES"
- 5 DUNN-EDWARDS PAINTS DE 643 "ALPACA WOOL"
- 6 DUNN-EDWARDS PAINTS DE 108 "BLACK BAY"



PROPOSED EAST EXTERIOR ELEVATION SCALE: 1/8" = 1'-0" A202



PROPOSED WEST EXTERIOR ELEVATION SCALE: 1/8" = 1'-0" A202



PROPOSED NORTH EXTERIOR ELEVATION SCALE: 1/8" = 1'-0" A202



PROPOSED SOUTH EXTERIOR ELEVATION SCALE: 1/8" = 1'-0" A202

GEORGE MEU ASSOCIATES

ARCHITECTURE

PLANNING

499 EMBARCADERO

OAKLAND

CALIFORNIA

PHONE 510 434 8888

Issue Date Description

26 SEPT. 2004 PERMIT/REVISION APPLICATOR

PROPOSED NEW COMMERCIAL DEVELOPMENT
GATEWAY SHOPPING CENTER
 FOR THOMAS GATEWAY, LLC
 PINOLE VALLEY ROAD BETWEEN I-40 AND HENRY AVENUE
 PINOLE, CALIFORNIA

Drawn by: Checked by: All numbers

APPLICANT:
 THOMAS GATEWAY, LLC
 C/O THOMAS PROPERTIES
 300 OAK ROAD, SUITE 900
 WALNUT CREEK, CA 94597

MEDICAL SERVICES EXTERIOR ELEVATIONS

A202

GEORGE MEU ASSOCIATES

DATE: 09/26/04

All drawings and details are prepared according to the conditions of the contract and shall be modified only by written amendments to the contract. No part of this drawing shall be used for any other project without the written consent of the architect.



2 EAST ELEVATION
SCALE: 1/8" = 1'-0"

- T.O. HIGH PARAPET 19'-0"
- T.O. PARAPET 18'-0"
- METAL FLASHING - PAINT TO MATCH CLASH EDWARDS - SOLAR WIND DECKS
- STUCCO FINISH - PAINT TO MATCH CLASH EDWARDS - TONERED WARM-YELLOW GRAYS
- T.O. STOREFRONT 18'-0"
- C-CHANNEL METAL TRIM PAINT TO MATCH ADJACENT BLDG METAL TRIM
- HORIZONTAL WOOD BEING PAINT TO MATCH CLASH EDWARDS - BARNBROT BROWN GRAYS
- T.O. ETCH VENEER 2'-0"
- INCLUDING ETCH VENEER AT BASE BY STONE TRIM CAP
- T.O. FINISH FLOOR 0'-0"

- STEEL CHANNEL CANOPY WITH METAL TRIM PAINT TO MATCH ADJACENT BLDG METAL TRIM
- STOREFRONT TOP BRUSHED ALUMINUM FINISH-HOLLOW



3 NORTH ELEVATION
SCALE: 1/8" = 1'-0"

- T.O. HIGH PARAPET 19'-0"
- T.O. PARAPET 18'-0"
- T.O. STOREFRONT 18'-0"
- T.O. STONE VENEER 2'-0"
- T.O. FINISH FLOOR 0'-0"



1 SOUTH ELEVATION
SCALE: 1/8" = 1'-0"

- T.O. HIGH PARAPET 19'-0"
- T.O. PARAPET 18'-0"
- T.O. STOREFRONT 18'-0"
- T.O. STONE VENEER 2'-0"
- T.O. FINISH FLOOR 0'-0"



4 WEST ELEVATION
SCALE: 1/8" = 1'-0"

- T.O. HIGH PARAPET 19'-0"
- T.O. PARAPET 18'-0"
- T.O. STOREFRONT 18'-0"
- T.O. STONE VENEER 2'-0"
- T.O. FINISH FLOOR 0'-0"

GEORGE MEU ASSOCIATES
ARCHITECTURE
PLANNING

100 BURNHAMME DRIVE
OAKLAND
CALIFORNIA
94612-4000
PHONE 710 474 0888

DATE: 11 JULY 2014
DESCRIPTION: DEVELOP. APPLIC.

PROPOSED NEW COMMERCIAL DEVELOPMENT
GATEWAY SHOPPING CENTER
FOR THOMAS GATEWAY, LLC
PINE VALLEY ROAD BETWEEN 140 AND HENRY AVENUE
PINELE, CALIFORNIA

APPLICANT:
THOMAS GATEWAY, LLC
C/O THOMAS PROPERTIES
3100 OAK ROAD, SUITE 8140
WALNUT CREEK, CA 94597

SHEET TITLE:
EXTERIOR ELEVATIONS

SCALE: 1/8" = 1'-0"

SD-3

PROJECT: MFC ASSOCIATES

DATE: 11 JULY 2014



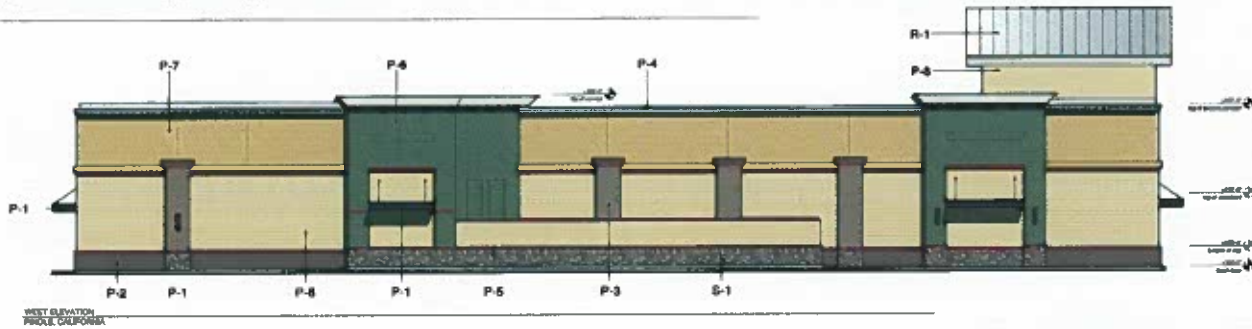
SOUTH ELEVATION
PINOLE, CALIFORNIA



EAST ELEVATION
PINOLE, CALIFORNIA



NORTH ELEVATION
PINOLE, CALIFORNIA



WEST ELEVATION
PINOLE, CALIFORNIA

June 16th, 2014
FITCH

PRELIMINARY EXTERIOR ELEVATIONS
PINOLE, CALIFORNIA