



Pinole Valley Road Landscape and Lighting Assessment District

FY 2021-22

Assessment Report

April 6, 2021

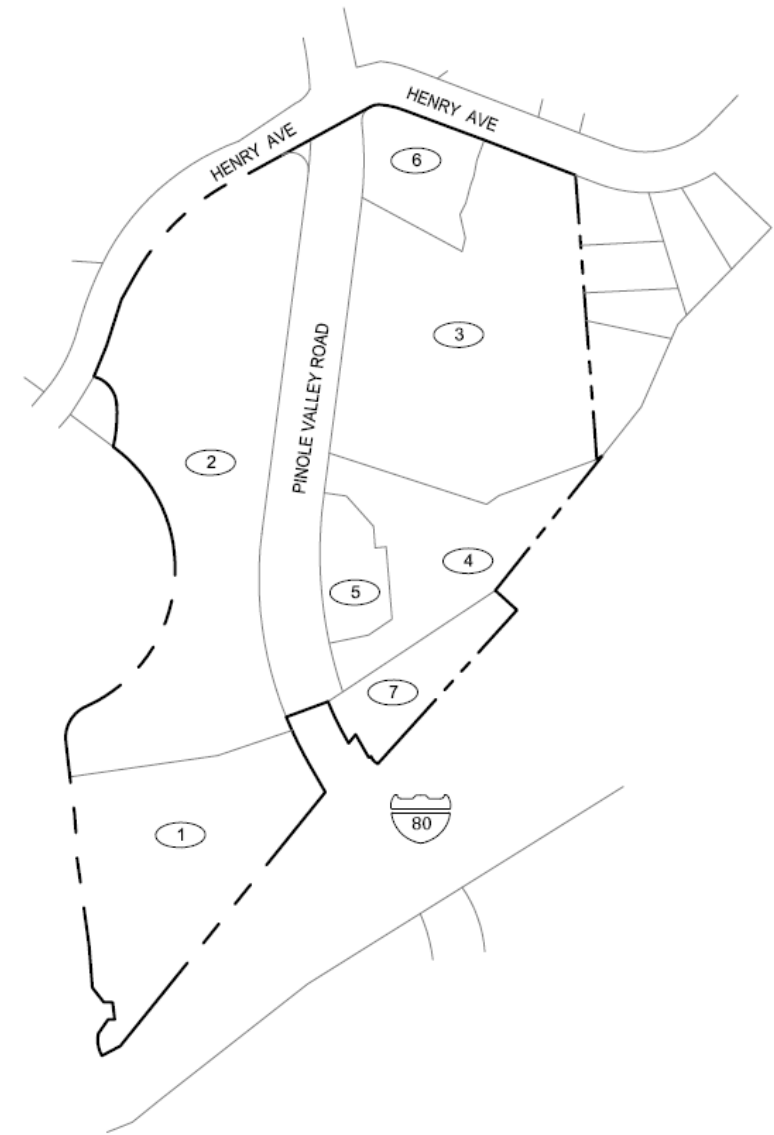
Purpose

- Traffic signals
- Streetlights
- Median landscaping
- Irrigation for landscaping
- Electricity to traffic signals and streetlights
- Graffiti removal



Zone A – North of I-80

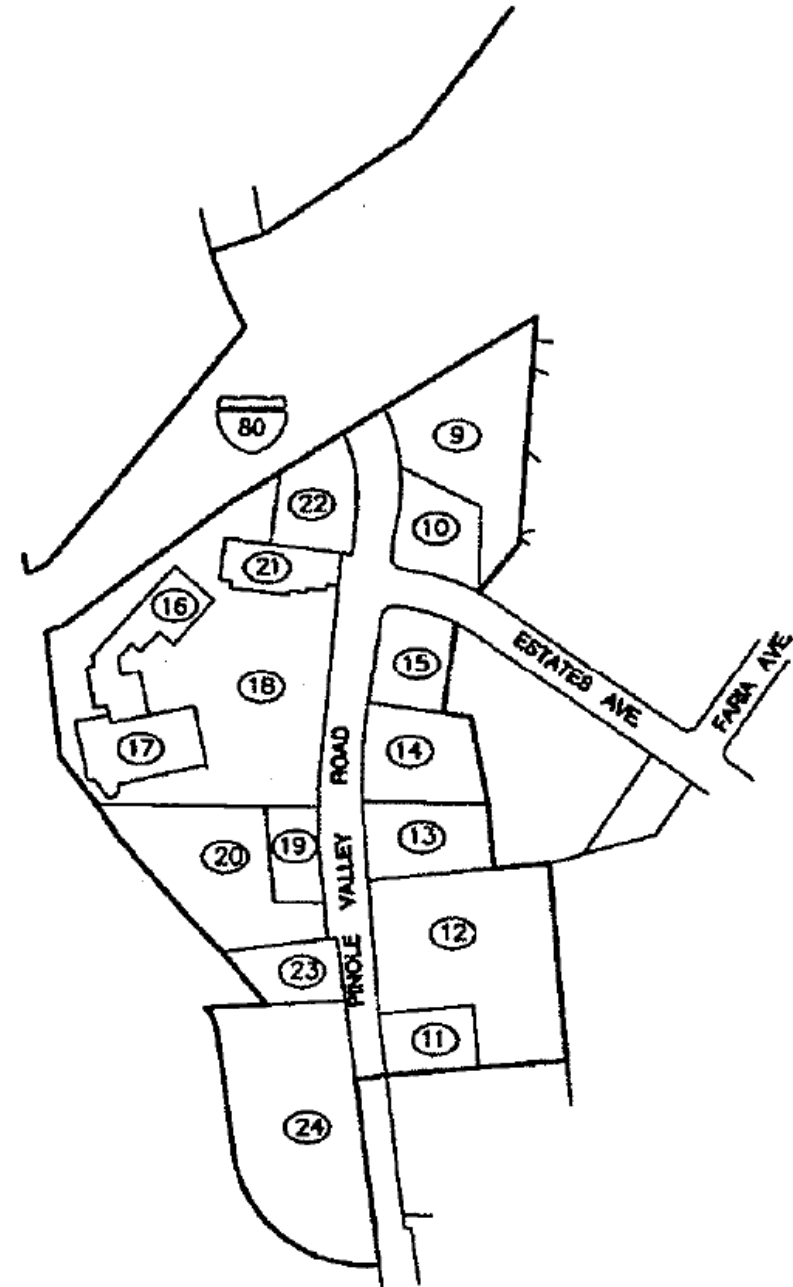
- Parcel #2 split
- 8 parcels total
- 16,920 sq. ft landscaping
- Irrigation system for landscaping and two irrigation controllers
- Maintenance of seven street light poles and fourteen streetlights
- Maintenance of two and a half traffic signals
- Electrical power for streetlights, traffic signals and irrigation system
- Weed control and abatement
- Graffiti abatement
- Median repairs and contingency for damage
- Litter abatement and collection (2,102 linear feet)



Zone B

South of I-80

- Parcel mergers
- 10 parcels total
- 18,486 sq. ft landscaping
- Irrigation system for landscaping and two irrigation controllers
- Maintenance of ten street light poles and twenty streetlights
- Maintenance of one and a half traffic signals
- Electrical power for streetlights, traffic signals and irrigation system
- Weed control and abatement
- Graffiti abatement
- Median repairs and contingency for damage
- Litter abatement and collection (2,859.58 linear feet)



Assessment Summary FY 2021-22

	Total Assessable Costs	Total Assessable Units	Proposed Assessment Rate per AU	Maximum Assessment Rate per AU
Zone A	\$25,073.04	52.796	\$474.90	\$582.14
Zone B	\$24,694.99	49.900	\$494.89	\$549.56

Assessment Unit (AU) – equivalent to an acre of developable property.

Actual assessments are rounded down to the nearest even penny for county tax roll purposes. The total District revenue is expected to be \$49,767.90.



**PINOLE VALLEY ROAD
LANDSCAPE AND
LIGHTING ASSESSMENT
DISTRICT**

Thank you



**FY 2021-22
ENGINEER'S REPORT**

APRIL 6, 2021