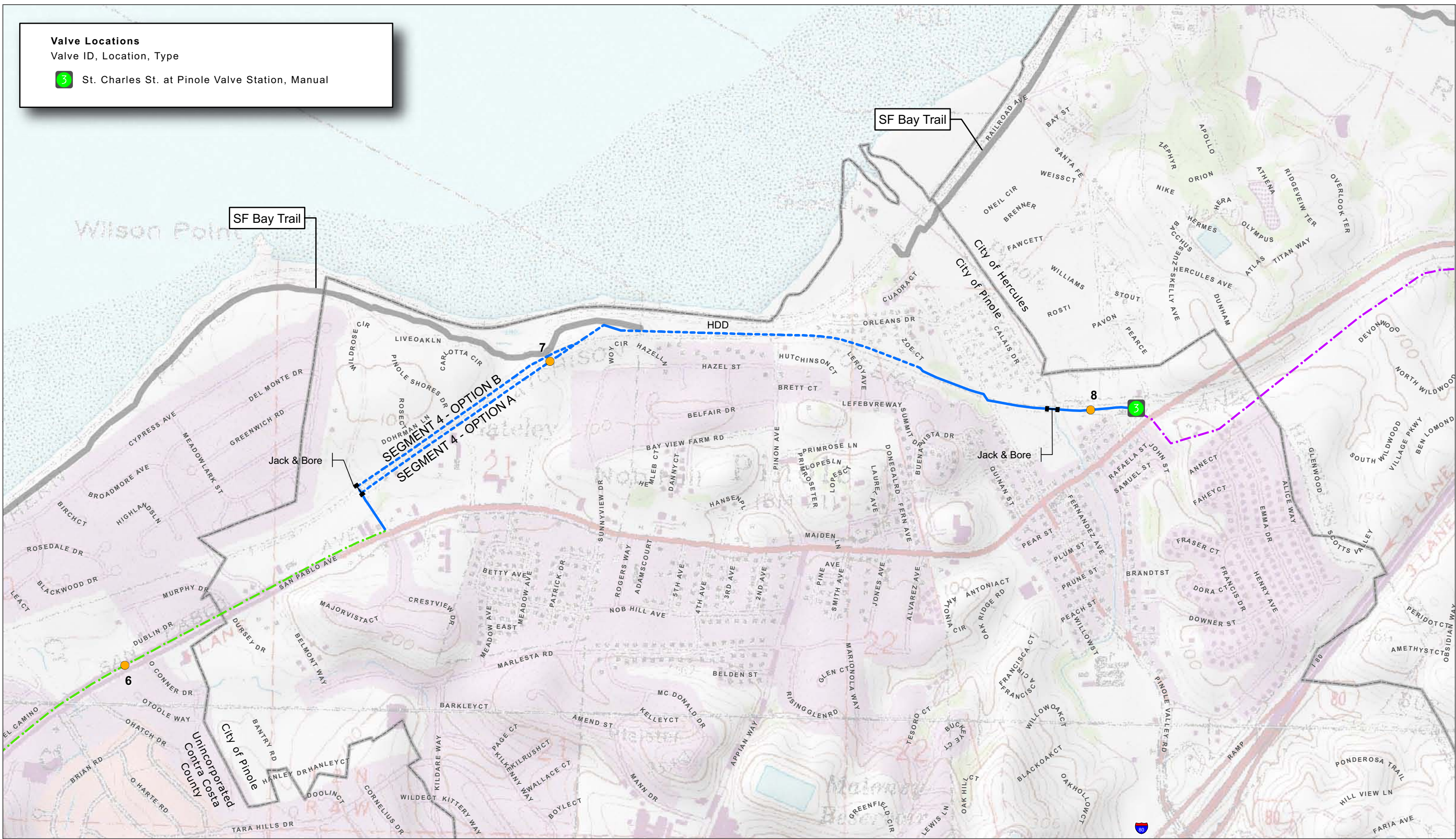


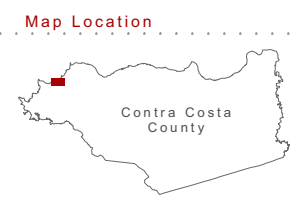
**Valve Locations**  
Valve ID, Location, Type

**3** St. Charles St. at Pinole Valve Station, Manual



**ENTRIX**  
Environmental and Natural Resource Management Consultants

**Map Projection**  
NAD\_1983\_StatePlane\_California\_III\_FIPS\_0403\_Feet  
Projection: Lambert\_Conformal\_Conic  
False\_Easting: 6561666.666667  
False\_Northing: 1640416.666667  
Central\_Meridian: -120.500000  
Standard\_Parallel\_1: 37.066667  
Standard\_Parallel\_2: 38.433333  
Latitude\_Of\_Origin: 36.500000  
Linear Unit: Foot\_US  
Datum: D\_North\_American\_1983



**Legend**

- Segment 2 (Red line)
- Segment 3 (Green dashed line)
- Milepost 1 (Orange dot)
- Segment 4 (Blue line)
- Segment 5 (Purple dashed line)
- Valve Location 1 (Green square with '1')
- Segment 6 (Dark red line)
- Segment 7 (Yellow line)
- Segment 8 (Brown line)
- Jack & Bore (Black T-junction symbol)

Note: Dot/Dashed lines represent existing Chevron #2 Line  
Dashed lines represent sections of pipeline where Horizontal Directional Drilling (HDD) will take place.

ENVIRONMENTAL IMPACT REPORT

**Contra Costa Pipeline Project**  
**PROPOSED PIPELINE ALIGNMENT AND VALVE LOCATIONS**

**FIGURE 3-1C**  
SEGMENT 4