

GENERAL NOTES

- DRAWINGS ARE NOT TO BE SCALED, WRITTEN DIMENSIONS TAKE PRECEDENCE, AND THIS SET OF PLANS IS INTENDED TO BE USED FOR DIAGRAMMATIC PURPOSES ONLY, UNLESS NOTED OTHERWISE. THE GENERAL CONTRACTOR'S SCOPE OF WORK SHALL INCLUDE FURNISHING ALL MATERIALS, EQUIPMENT, LABOR AND ANYTHING ELSE DEEMED NECESSARY TO COMPLETE INSTALLATIONS AS DESCRIBED HEREIN.
- PRIOR TO THE SUBMISSION OF BIDS, THE CONTRACTORS INVOLVED SHALL VISIT THE JOB SITE AND FAMILIARIZE THEMSELVES WITH ALL CONDITIONS AFFECTING THE PROPOSED PROJECT, WITH THE CONSTRUCTION AND CONTRACT DOCUMENTS, FIELD CONDITIONS AND CONFIRM THAT THE PROJECT MAY BE ACCOMPLISHED AS SHOWN PRIOR TO PROCEEDING WITH CONSTRUCTION. ANY ERRORS, OMISSIONS, OR DISCREPANCIES ARE TO BE BROUGHT TO THE ATTENTION OF THE ARCHITECT/ ENGINEER.
- THE GENERAL CONTRACTOR SHALL RECEIVE WRITTEN AUTHORIZATION TO PROCEED WITH CONSTRUCTION PRIOR TO STARTING WORK ON ANY ITEM NOT CLEARLY DEFINED BY THE CONSTRUCTION DRAWINGS/CONTRACT DOCUMENTS.
- THE CONTRACTOR SHALL SUPERVISE AND DIRECT THE PROJECT DESCRIBED HEREIN. THE CONTRACTOR SHALL BE SOLELY RESPONSIBLE FOR ALL CONSTRUCTION MEANS, METHODS, TECHNIQUES, SEQUENCES, AND PROCEDURES AND FOR COORDINATING ALL PORTIONS OF THE WORK UNDER THE CONTRACT.
- THE CONTRACTOR SHALL INSTALL ALL EQUIPMENT AND MATERIALS ACCORDING TO MANUFACTURER'S/VENDOR'S SPECIFICATIONS UNLESS NOTED OTHERWISE OR WHERE LOCAL CODES OR ORDINANCES TAKE PRECEDENCE.
- ALL WORK PERFORMED ON PROJECT AND MATERIALS INSTALLED SHALL BE IN STRICT ACCORDANCE WITH ALL APPLICABLE CODES, REGULATIONS, AND ORDINANCES. CONTRACTOR SHALL GIVE ALL NOTICES AND COMPLY WITH ALL LAWS, ORDINANCES, RULES, REGULATIONS, AND LAWFUL ORDERS OF ANY PUBLIC AUTHORITY, MUNICIPAL AND UTILITY COMPANY SPECIFICATIONS, AND LOCAL AND STATE JURISDICTIONAL CODES BEARING ON THE PERFORMANCE OF THE WORK.
- GENERAL CONTRACTOR SHALL PROVIDE AT THE PROJECT SITE A FULL SET OF CONSTRUCTION DOCUMENTS UPDATED WITH THE LATEST REVISIONS AND ADDENDUMS OR CLARIFICATIONS FOR THE USE BY ALL PERSONNEL INVOLVED WITH THE PROJECT.
- THE STRUCTURAL COMPONENTS OF THIS PROJECT SITE/FACILITY ARE NOT TO BE ALTERED BY THIS CONSTRUCTION PROJECT UNLESS NOTED OTHERWISE.
- DETAILS HEREIN ARE INTENDED TO SHOW END RESULT OF DESIGN. MINOR MODIFICATIONS MAY BE REQUIRED TO SUIT JOB CONDITIONS OR SITUATIONS, AND SUCH MODIFICATIONS SHALL BE INCLUDED AS PART OF THE SCOPE OF WORK.
- SEAL PENETRATIONS THROUGH FIRE-RATED AREAS WITH U.L. LISTED OR FIRE MARSHALL APPROVED MATERIALS IF APPLICABLE TO THIS FACILITY AND OR PROJECT SITE.
- THE CONTRACTOR SHALL MAKE NECESSARY PROVISIONS TO PROTECT EXISTING IMPROVEMENTS, EASEMENTS, PAVING, CURBING, ETC. DURING CONSTRUCTION. UPON COMPLETION OF WORK, CONTRACTOR SHALL REPAIR ANY DAMAGE THAT MAY HAVE OCCURED DUE TO THE CONSTRUCTION ON OR ABOUT THE PROPERTY.
- CONTRACTOR SHALL SEE TO IT THAT GENERAL WORK AREA IS KEPT CLEAN AND HAZARD FREE DURING CONSTRUCTION AND DISPOSE OF ALL DIRT, DEBRIS, RUBBISH AND REMOVE EQUIPMENT NOT SPECIFIED AS REMAINING ON THE PROPERTY. PREMISES SHALL BE LEFT IN CLEAN CONDITION AND FREE FROM PAINT SPOTS, DUST, OR SMUDGES OF ANY NATURE.
- THE ARCHITECTS/ENGINEERS HAVE MADE EVERY EFFORT TO SET FORTH IN THE CONSTRUCTION AND CONTRACT DOCUMENTS THE COMPLETE SCOPE OF WORK. CONTRACTORS BIDDING THE JOB ARE NEVERTHELESS CAUTIONED THAT MINOR OMISSIONS OR ERRORS IN THE DRAWINGS AND OR SPECIFICATIONS SHALL NOT EXCUSE SAID CONTRACTOR FROM COMPLETING THE PROJECT AND IMPROVEMENTS IN ACCORDANCE WITH THE INTENT OF THESE DOCUMENTS. THE BIDDER SHALL BEAR THE RESPONSIBILITY OF NOTIFYING (IN WRITING) THE ARCHITECT/ENGINEER OF ANY CONFLICTS, ERRORS, OR OMISSIONS PRIOR TO THE SUBMISSION OF CONTRACTOR'S PROPOSAL. IN THE EVENT OF DISCREPANCIES THE CONTRACTOR SHALL PRICE THE MORE COSTLY OR EXTENSIVE WORK, UNLESS DIRECTED OTHERWISE.

DIRECTIONS

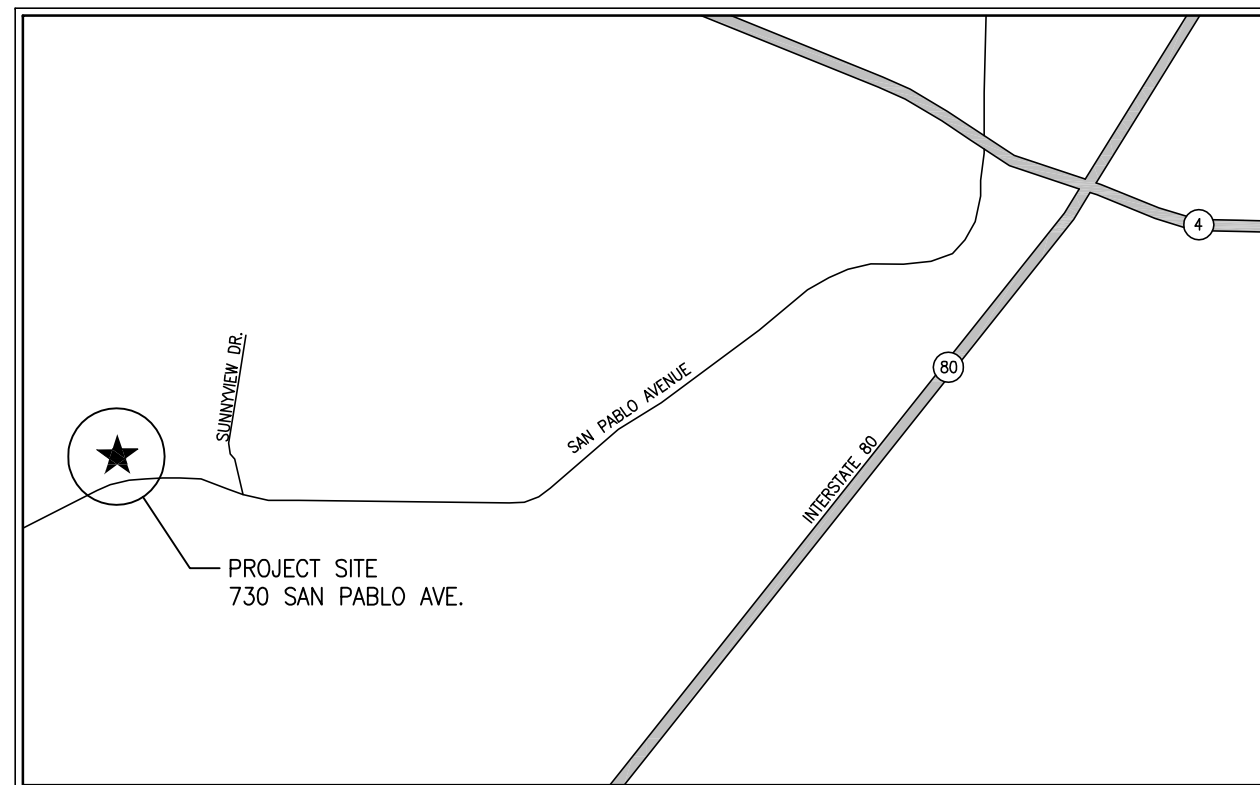
FROM AT&T OFFICE @ 4430 ROSEWOOD DRIVE, PLEASANTON, CA 94588:

- HEAD EAST ON ROSEWOOD DR.
 - MAKE A U-TURN.
 - TURN RIGHT AT OWENS DR.
 - TURN RIGHT AT HACIENDA DR.
 - MERGE ONTO I-580 W VIA THE RAMP TO OAKLAND.
 - TAKE THE EXIT ONTO I-680 N TOWARD SACRAMENTO.
 - TAKE EXIT 53 TO MERGE ONTO CA-4 W TOWARD MARTINEZ/HERCULES.
 - TURN LEFT AT SAN PABLO AVE
DESTINATION WILL BE ON THE RIGHT.
- 730 SAN PABLO AVE
PINOLE, CA 94564



4430 Rosewood Drive, Bldg. 3
Pleasanton, CA 94588

PINOLE COW
(CELL-ON-WHEELS)
SITE NUMBER: CNU6048
730 SAN PABLO AVENUE
PINOLE, CA 94564
APN: 402-210-012-9



PINOLE, CA

LOCATION PLAN

PROJECT DIRECTORY

SITE ACQUISITION:
PAULA WELLS
COMPLETE WIRELESS CONSULTING, INC.
2009 V STREET
SACRAMENTO, CA 95818
916-217-7504

LANDLORD:
PINOLE SERVICE CENTER INC.
730 SAN PABLO AVENUE
PINOLE, CA 94564

ARCHITECT:
MANUEL S. TSIHLAS
MST ARCHITECTS, INC.
801 ALHAMBRA BLVD., SUITE 2
SACRAMENTO, CA 95816
916-505-3811
manuel@mstarchitects.com

OWNER/APPLICANT:
AT&T
4430 ROSEWOOD DRIVE, BLDG. 3
PLEASANTON, CA 94588

CONSTRUCTION MANAGER:
TIM TYNAN
AT&T
4430 ROSEWOOD DRIVE, BLDG. 3
PLEASANTON, CA 94588
559-217-8734
tt810j@att.com

PROJECT SUMMARY

PROPERTY INFORMATION
LATITUDE: N38° 00' 19.09" NAD 83
LONGITUDE: W122° 18' 40.82" NAD 83
ASSESSOR'S PARCEL NUMBER: 402-210-012-9
JURISDICTION: CITY OF PINOLE
OCCUPANCY: N/A - PORTABLE CELL ON WHEELS
TYPE OF CONSTRUCTION: N/A
ZONING: LIGHT INDUSTRIAL

CODE COMPLIANCE

ALL WORK AND MATERIALS SHALL BE PERFORMED AND INSTALLED IN ACCORDANCE WITH THE CURRENT EDITIONS OF THE FOLLOWING CODES AS ADOPTED BY THE LOCAL GOVERNING AUTHORITIES. NOTHING IN THESE PLANS IS TO BE CONSTRUED TO PERMIT WORK NOT CONFORMING TO THESE CODES:

- CALIFORNIA ADMINISTRATIVE CODE (INCL. TITLE 24 & 25)
- 2007 CALIFORNIA BUILDING CODE (CBC)
- 2007 CALIFORNIA MECHANICAL CODE (CMC)
- 2007 CALIFORNIA PLUMBING CODE (CPC)
- 2007 CALIFORNIA ENERGY CODE (CEnc)
- 2007 CALIFORNIA ELECTRICAL CODE (CEC)
- 2007 CALIFORNIA FIRE CODE (CFC)
- LOCAL COUNTY OR CITY ORDINANCES

ACCESSIBILITY REQUIREMENTS:
THIS FACILITY IS UNMANNED AND NOT FOR HUMAN HABITATION. HANDICAPPED ACCESS REQUIREMENTS ARE NOT REQUIRED IN ACCORDANCE WITH THE 2007 CALIFORNIA BUILDING CODE.

PROJECT DESCRIPTION

PROPOSED AT&T TEMPORARY COMMUNICATIONS FACILITY ON A 20'-0" x 25'-0" LEASE AREA INCLUDING:

- * INSTALL A 15'-0" X 20'-0" TEMPORARY CELL ON WHEELS (COW).
- * INSTALL A NEW WALKABLE CABLE TRAY.
- * INSTALL A NEW 200A SERVICE METER ON EXTERIOR FACE OF EXISTING BUILDING.
- * INSTALL A NEW TELCO BOX ON EXTERIOR FACE OF EXISTING BUILDING.

PROJECT MILESTONES

07/15/10	90% CONSTRUCTION DOCUMENTS
07/23/10	100% CONSTRUCTION DOCUMENTS

INDEX OF DRAWINGS

1	T1.1	TITLE SHEET, LOCATION PLAN, PROJECT DATA
2	A1.1	OVERALL SITE PLAN
3	A1.2	EQUIPMENT LAYOUT PLAN
4	A1.3	PROJECT ELEVATIONS
5	E1.1	ELECTRICAL & GROUNDING DETAILS



CNU6048 - PINOLE COW
730 SAN PABLO AVENUE
PINOLE, CA 94564



Revisions:

△	--
△	--
△	--
△	--
△	--

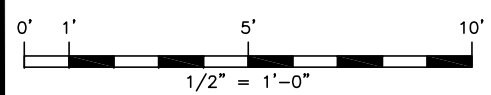
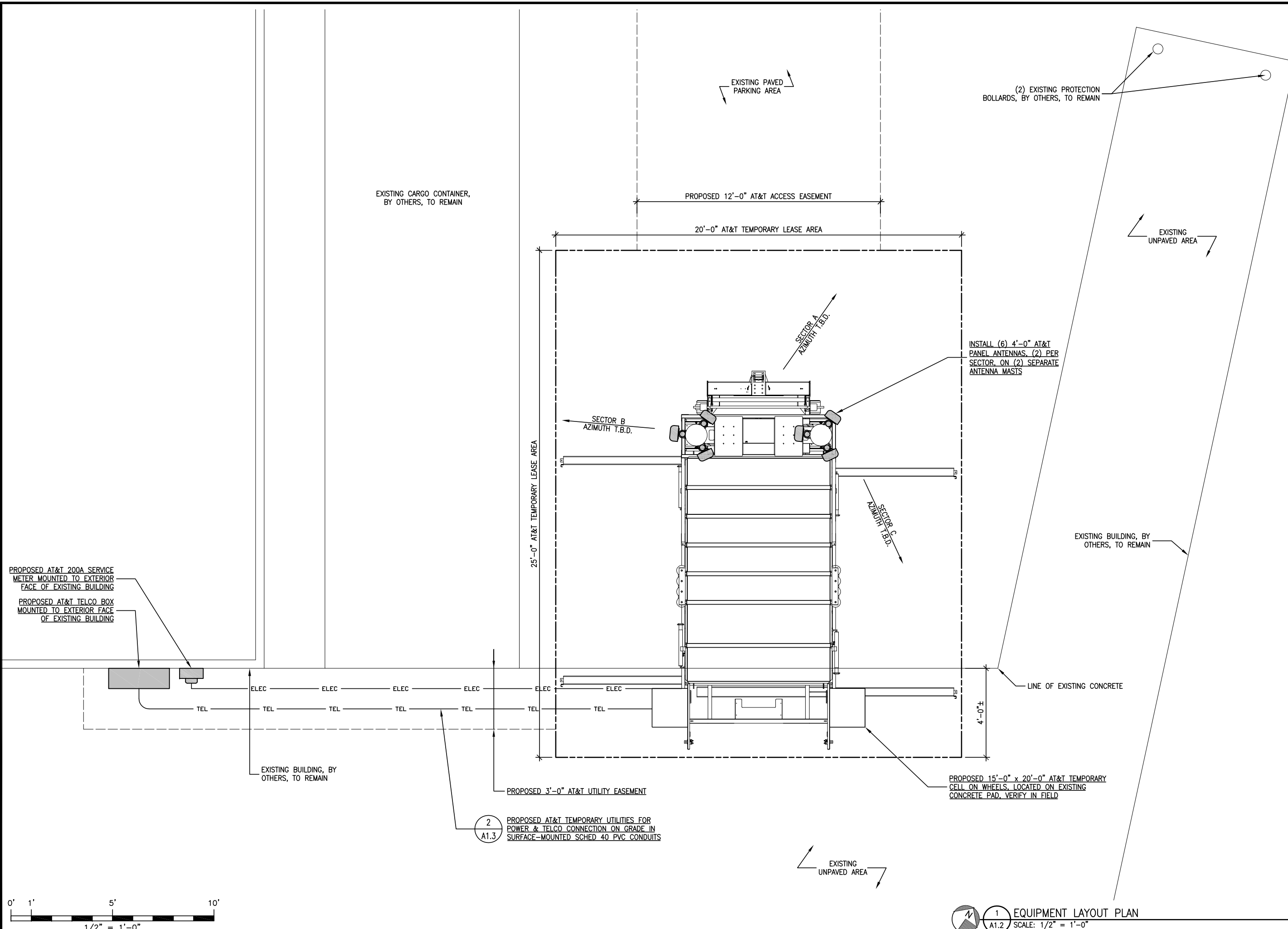
File: 206.003_T11.DWG
Drawn By: ALB
Checked By: MST
Scale: AS NOTED
Date: 07/23/10

Job No. 206.003

T1.1

THESE DRAWINGS AND SPECIFICATIONS AS INSTRUMENTS OF SERVICE ARE AND SHALL REMAIN THE PROPERTY OF MST ARCHITECTS, INC. WHETHER THE PROJECTS ARE COMPLETED OR NOT. NO PART OF THESE DRAWINGS OR SPECIFICATIONS SHALL BE REPRODUCED OR TRANSMITTED IN ANY FORM OR BY ANY MEANS WITHOUT THE WRITTEN CONSENT OF THE ARCHITECT. CONTRACTORS AND ARCHITECTS SHALL BE RESPONSIBLE FOR OBTAINING ALL NECESSARY PERMITS.

SHEET TITLE: TITLE SHEET, LOCATION PLAN, PROJECT DATA



1
A1.2 EQUIPMENT LAYOUT PLAN
SCALE: 1/2" = 1'-0"

MST ARCHITECTS
ARCHITECTS & ENGINEERS
801 Alhambra Blvd., Suite 2, Sacramento, CA 95816
PH: (916) 341-0405 FAX: (916) 341-0408
www.mstarchitects.com

COMPLETE
Wireless Consulting, Inc.

THESE DRAWINGS AND SPECIFICATIONS AS INSTRUMENTS OF SERVICE ARE AND SHALL REMAIN THE PROPERTY OF MST ARCHITECTS, INC. WHETHER THE PROJECTS FOR WHICH THESE DRAWINGS AND SPECIFICATIONS ARE PREPARED ARE OR WILL BE UNDER THE CONTROL OF ANY PERSON OR ENTITY OR OTHER PROJECTS WITHOUT THE WRITTEN CONSENT OF THE ARCHITECT. CONTRACTORS AND ARCHITECTS, INC. ARE NOT BEING LICENSED.

CNU6048 - PINOLE COW
730 SAN PABLO AVENUE
PINOLE, CA 94564

at&t

SHEET TITLE:
EQUIPMENT LAYOUT PLAN

REGISTERED ARCHITECT
MANUEL S. TSIPAS
No. C-28021
Exp. 08-11
STATE OF CALIFORNIA

Not valid unless signed in ink by licensee.

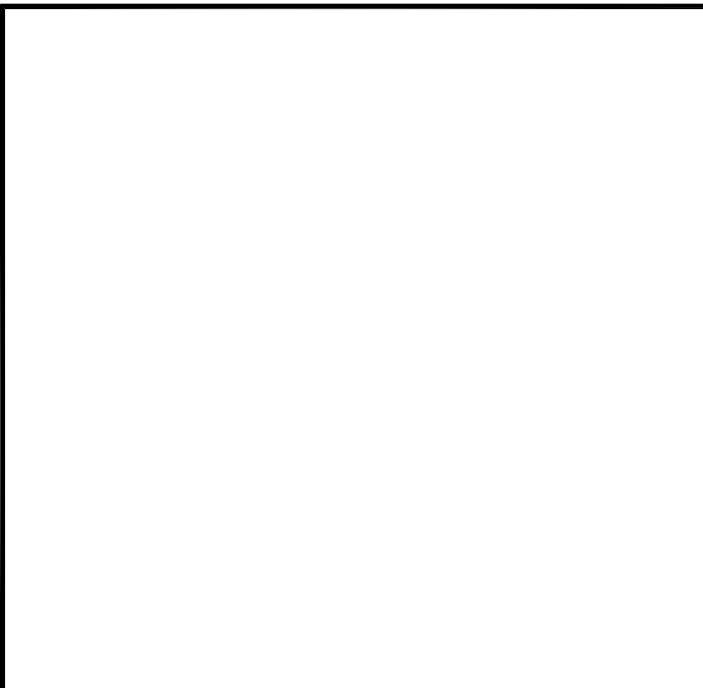
Revisions:

△	--
△	--
△	--
△	--
△	--

File: 206.003_A12.DWG
Drawn By: ALB
Checked By: MST
Scale: AS NOTED
Date: 07/23/10

Job No. 206.003

A1.2



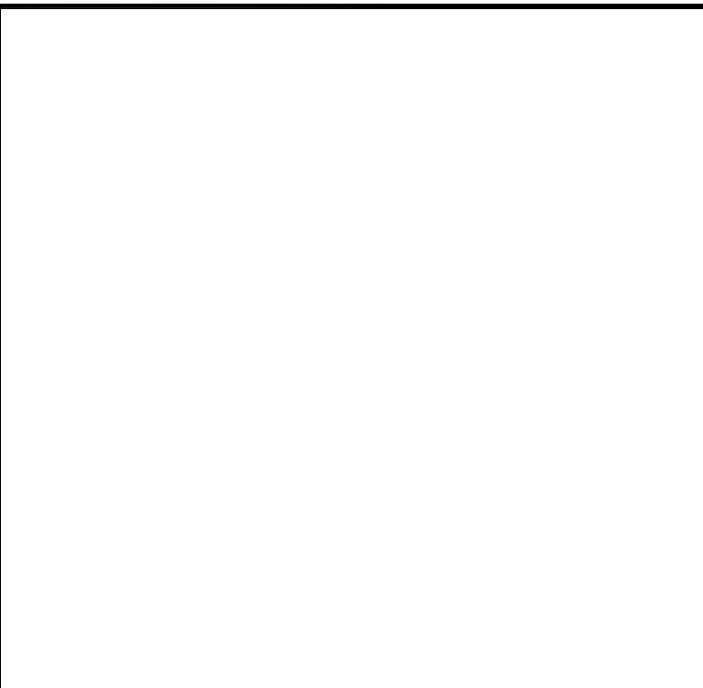
TOP OF PROPOSED AT&T ANTENNA MAST
37.0' A.G.L.
CL OF PROPOSED AT&T PANEL ANTENNAS
35.0' A.G.L.

INSTALL (6) 4'-0" AT&T
PANEL ANTENNAS, (2) PER
SECTOR, ON (2) SEPERATE
ANTENNA MASTS

PROPOSED 15'-0" x
20'-0" AT&T TEMPORARY
CELL ON WHEELS, ON
EXISTING CONCRETE PAD,
VERIFY IN FIELD

EXISTING GRADE @ CONCRETE PAD

4 NORTH ELEVATION
A1.3 SCALE: 1/4" = 1'-0"



TOP OF PROPOSED AT&T ANTENNA MAST
37.0' A.G.L.
CL OF PROPOSED AT&T PANEL ANTENNAS
35.0' A.G.L.

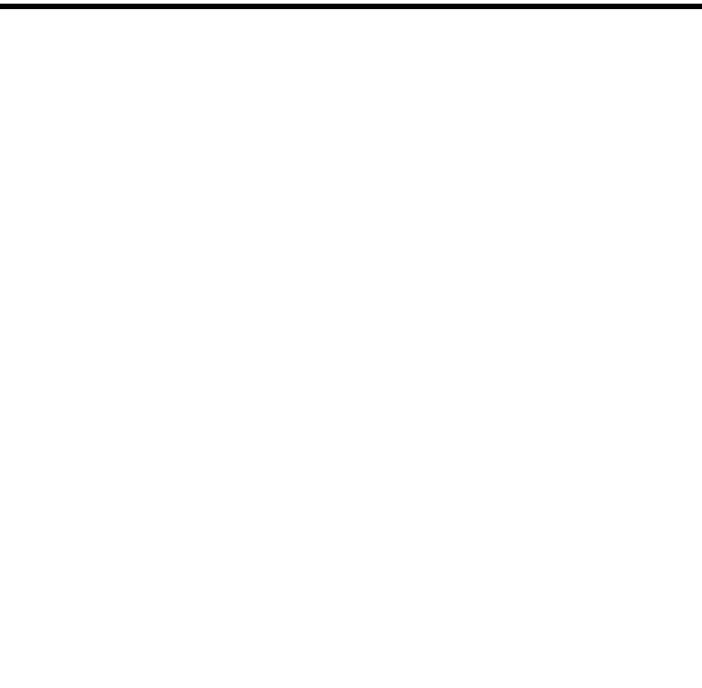
INSTALL (6) 4'-0" AT&T
PANEL ANTENNAS, (2) PER
SECTOR, ON (2) SEPERATE
ANTENNA MASTS

PROPOSED 15'-0" x
20'-0" AT&T TEMPORARY
CELL ON WHEELS, ON
EXISTING CONCRETE PAD,
VERIFY IN FIELD

EXISTING GRADE @ CONCRETE PAD

PROPOSED AT&T UTILITIES, POWER & TELCO,
WITHIN A PROPOSED WALKABLE CABLE TRAY

3 SOUTH ELEVATION
A1.3 SCALE: 1/4" = 1'-0"



TOP OF PROPOSED AT&T ANTENNA MAST
37.0' A.G.L.
CL OF PROPOSED AT&T PANEL ANTENNAS
35.0' A.G.L.

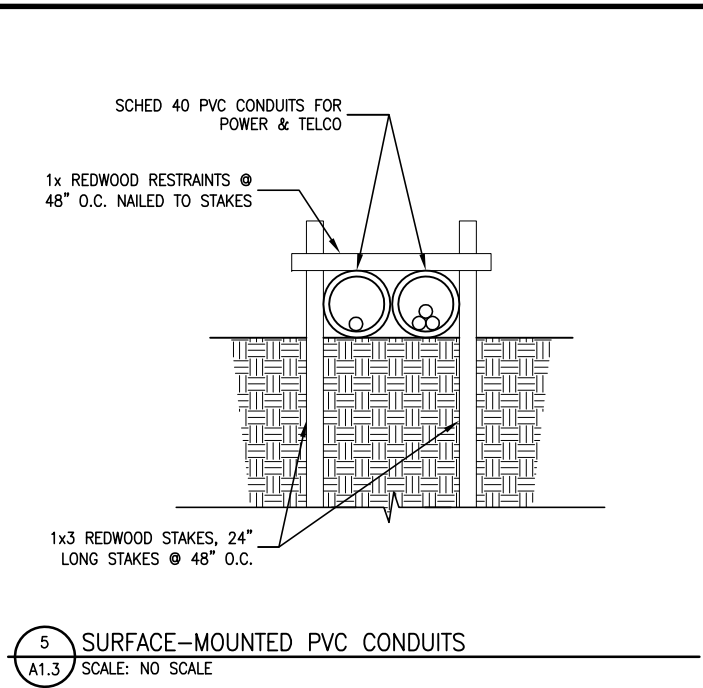
INSTALL (6) 4'-0" AT&T PANEL
ANTENNAS, (2) PER SECTOR, ON (2)
SEPERATE ANTENNA MASTS

PROPOSED 15'-0" x
20'-0" AT&T TEMPORARY
CELL ON WHEELS, ON
EXISTING CONCRETE PAD,
VERIFY IN FIELD

EXISTING GRADE @ CONCRETE PAD

PROPOSED AT&T UTILITIES, POWER & TELCO,
WITHIN A PROPOSED WALKABLE CABLE TRAY

2 EAST ELEVATION
A1.3 SCALE: 1/4" = 1'-0"



TOP OF PROPOSED AT&T ANTENNA MAST
37.0' A.G.L.
CL OF PROPOSED AT&T PANEL ANTENNAS
35.0' A.G.L.

INSTALL (6) 4'-0" AT&T PANEL
ANTENNAS, (2) PER SECTOR, ON (2)
SEPERATE ANTENNA MASTS

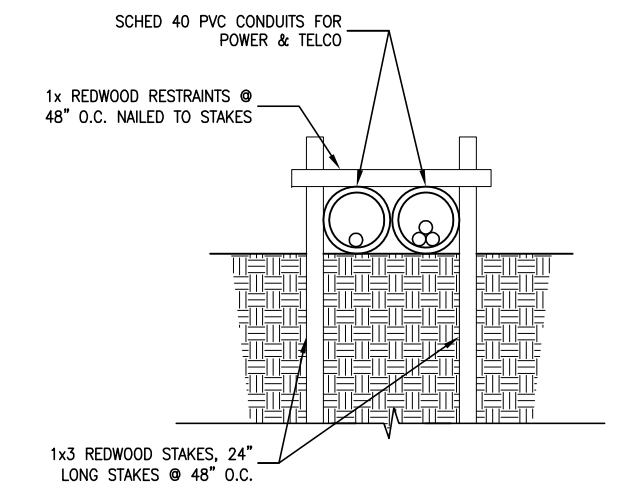
PROPOSED 15'-0" x 20'-0"
AT&T TEMPORARY CELL ON
WHEELS, ON EXISTING CONCRETE
PAD, VERIFY IN FIELD

EXISTING BUILDING (BEYOND),
BY OTHERS, TO REMAIN

PROPOSED AT&T UTILITIES, POWER & TELCO,
WITHIN A PROPOSED WALKABLE CABLE TRAY

1 WEST ELEVATION
A1.3 SCALE: 1/4" = 1'-0"

5 SURFACE-MOUNTED PVC CONDUITS
A1.3 SCALE: NO SCALE



MST ARCHITECTS
ARCHITECTS & ENGINEERS
801 Alhambra Blvd., Suite 2, Sacramento, CA 95816
Ph: (916) 341-0405 Fax: (916) 341-0408
mst@architects.com

COMPLETE
Wireless Consulting, Inc.

THESE DRAWINGS AND SPECIFICATIONS, AS INSTRUMENTS OF SERVICE, ARE AND SHALL REMAIN THE PROPERTY OF MST ARCHITECTS, INC. WHETHER THE PROJECTS FOR WHICH THEY WERE PREPARED OR NOT. NO PART OF THESE DRAWINGS OR SPECIFICATIONS SHALL BE REPRODUCED, COPIED, OR TRANSMITTED IN ANY FORM OR BY ANY MEANS, WITHOUT THE WRITTEN CONSENT OF THE ARCHITECT. CONTRACTORS AND ARCHITECTS SHALL BE RESPONSIBLE FOR VERIFYING ALL DIMENSIONS AND CONDITIONS.

CNU6048 - PINOLE COW
730 SAN PABLO AVENUE
PINOLE, CA 94564

at&t

SHEET TITLE:
PROJECT ELEVATIONS

REGISTERED ARCHITECT
MANUEL S. TSIPAS
No. C-28021
Exp. 08-11
STATE OF CALIFORNIA

Not valid unless signed in ink by licensee.

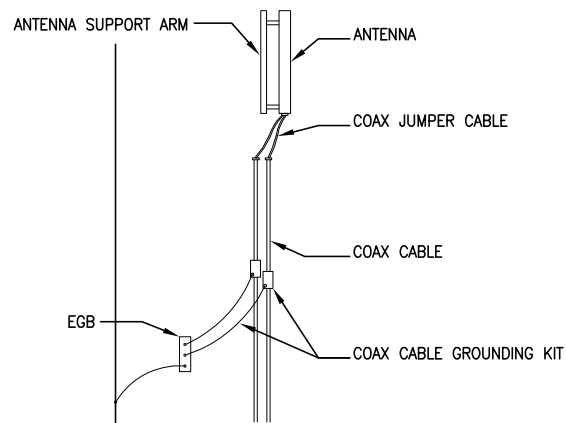
Revisions:

△	--
△	--
△	--
△	--
△	--

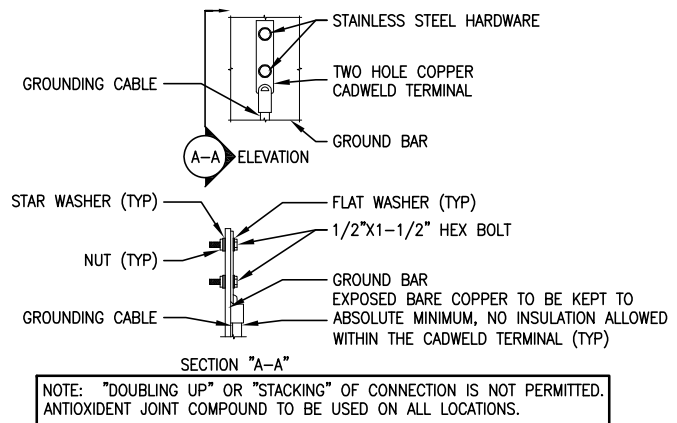
File: 206.003_A1.3.DWG
Drawn By: ALB
Checked By: MST
Scale: AS NOTED
Date: 07/23/10

Job No. 206.003

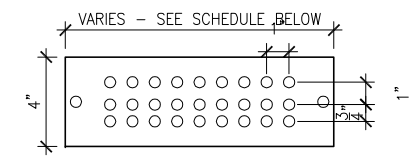
A1.3



7 COAX CONNECTION & GROUNDING DETAIL
E1.1 SCALE: 1/4"=1'-0"



5 TYPICAL GROUND BAR CONNECTIONS DETAIL
E1.1 SCALE: 1/4"=1'-0"

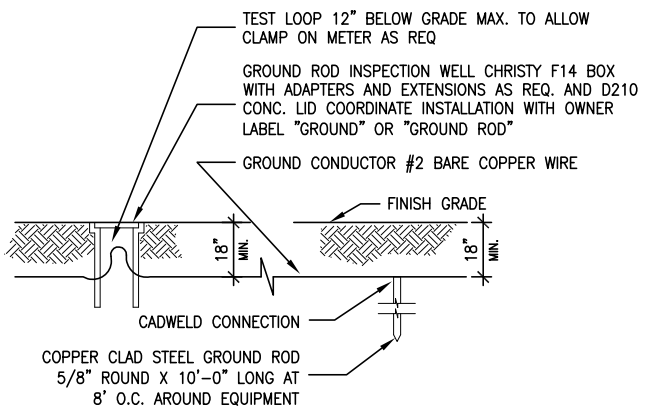


AT&T MOBILITY GALVANIZED STEEL GROUND BAR W/ANTI-THEFT HARDWARE, NON-REMOVABLE PROVIDED BY ELECTRIC MOTION COMPANY	
PART #	BAR DESCRIPTION
EM SGC 49-VZW-NR	1/4"x4"x9"
EM SGC 412-VZW-NR	1/4"x4"x12"
EM SGC 418-VZW-NR	1/4"x4"x18"
EM SGC 420-VZW-NR	1/4"x4"x20"
EM SGC 424-VZW-NR	1/4"x4"x24"

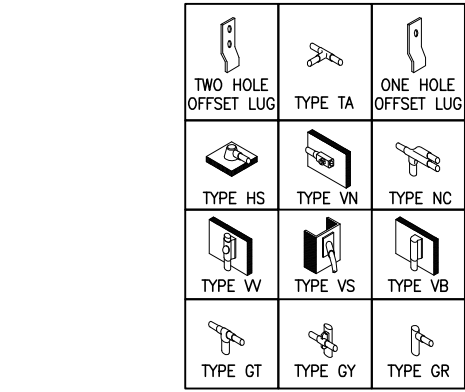
INCLUDES TWO STAINLESS STEEL TORQUE SHEAR HEAD BOLTS, W/ANTI LOOSENING COMPOUND

GENERAL CONTRACTOR TO STAMP "AT&T MOBILITY" & SITE NUMBER BAR & PAINT ANTI-THEFT COMPOUND PROVIDED BY ELECTRIC MOTION COMPANY, PRODUCT #EM 5101

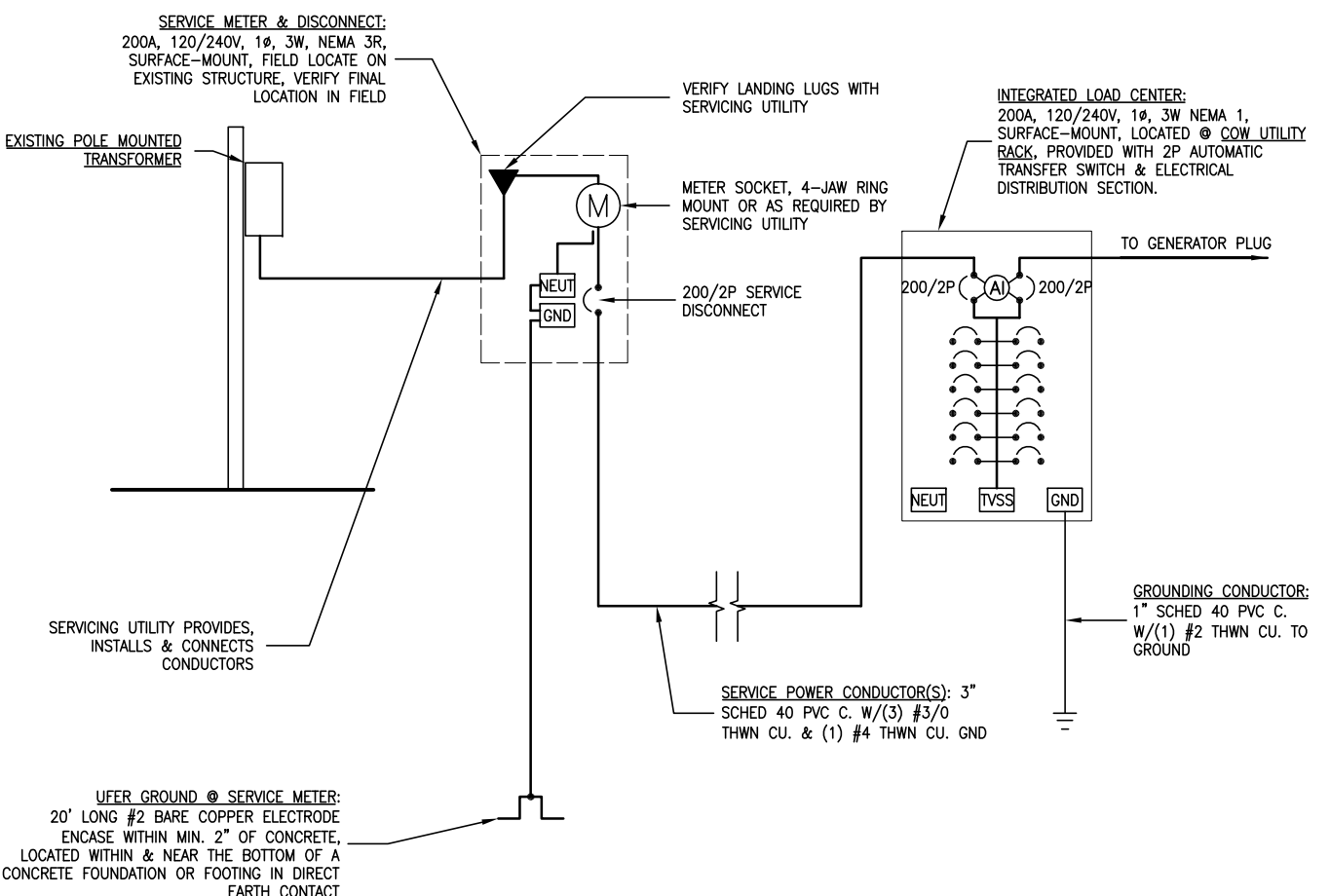
2 GROUND BAR DETAIL
E1.1 SCALE: 3" = 1'-0"



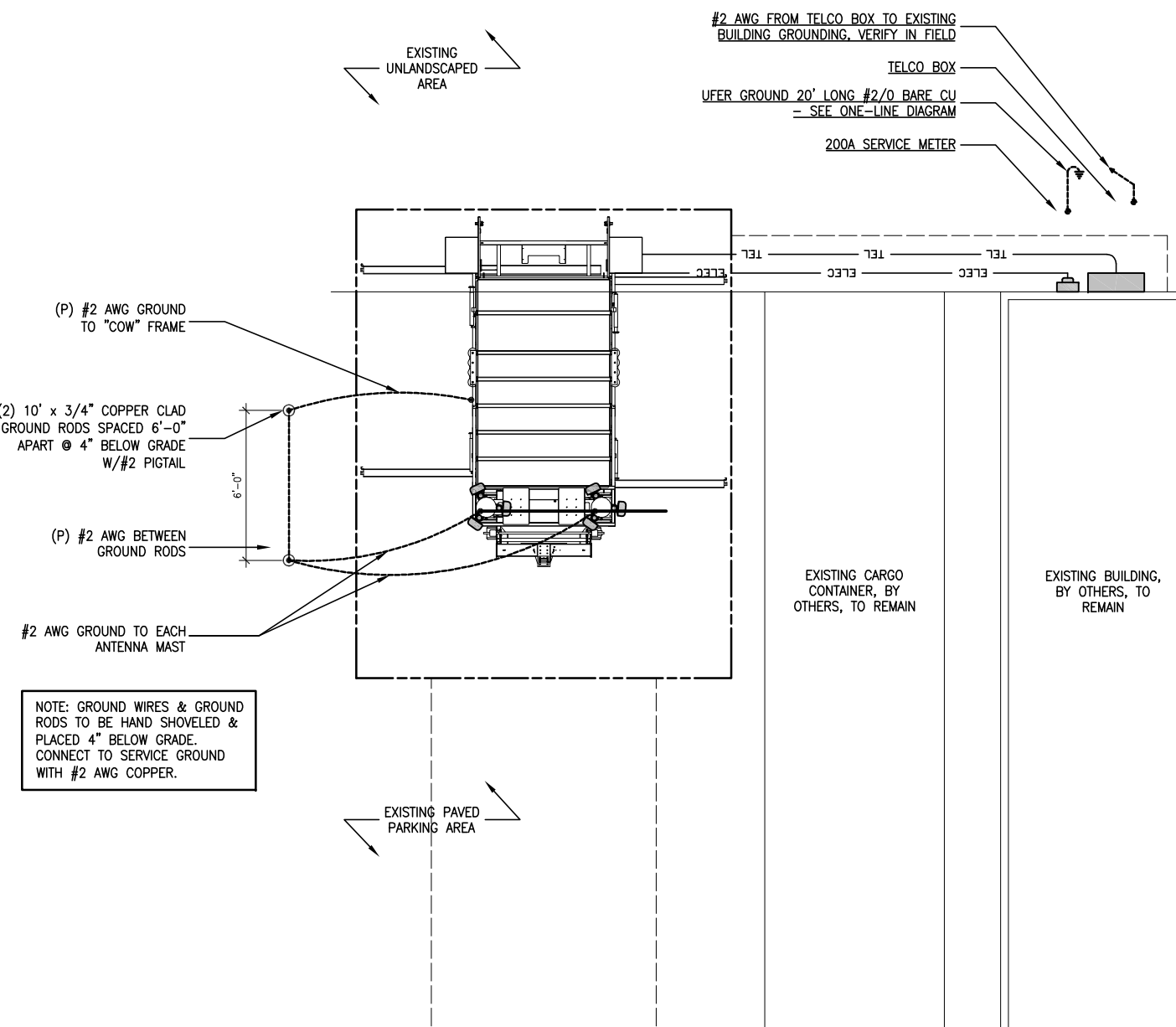
6 INSPECTION WELL / GROUND ROD DETAIL
E1.1 SCALE: 1/4"=1'-0"



4 GROUND CONNECTION DETAIL
E1.1 SCALE: NO SCALE



2 ONE-LINE DIAGRAM
E1.1 SCALE: 1/4" = 1'-0"



1 GROUNDING PLAN
E1.1 SCALE: 1/4" = 1'-0"

GROUNDING NOTES

- GROUNDING SHALL COMPLY WITH NEC ART. 250.
- GROUND COAXIAL CABLE SHIELDS MINIMUM AT BOTH ENDS USING MANUFACTURER'S COAX CABLE GROUNDING KITS SUPPLIED BY PBMS.
- USE #2 COPPER STRANDED WIRE WITH GREEN COLOR INSULATION FOR ABOVE GRADE GROUNDING (UNLESS OTHERWISE SPECIFIED) AND #2 SOLID TINNED BARE COPPER WIRE FOR BELOW GRADE GROUNDING AS INDICATED ON THE DRAWING.
- ALL GROUND CONNECTIONS TO BE BURNDY HYGROUND COMPRESSION TYPE CONNECTORS OR CADWELD EXOTHERMIC WELD. DO NOT ALLOW BARE COPPER WIRE TO BE IN CONTACT WITH CALVANIZED STEEL.
- ROUTE GROUNDING CONDUCTORS ALONG THE SHORTEST AND STRAIGHTEST PATH POSSIBLE, EXCEPT AS OTHERWISE INDICATED. GROUNDING LEADS SHOULD NEVER BE BENT AT RIGHT ANGLE. ALWAYS MAKE AT LEAST 12" RADIUS BENDS. #6 WIRE CAN BE BENT AT 6" RADIUS WHEN NECESSARY.
- BOND ANY METAL OBJECTS WITHIN 7 FEET OF PBMS EQUIPMENT OR CABINET TO THE MASTER GROUND BAR.
- CONNECTIONS TO MGB SHALL BE ARRANGED IN THREE MAIN GROUPS: SURGE PRODUCERS (COAXIAL CABLE GROUND KITS, TELCO AND POWER PEDESTAL GROUND OR SURGE PROTECTOR); SURGE ABSORBERS (GROUNDING ELECTRODE RING OR BUILDING STEEL); NON-SURGING OBJECTS (EGB GROUND IN BTS)
- CONNECTIONS TO GROUND BARS SHALL BE MADE WITH TWO HOLE COMPRESSION TYPE COPPER LUGS AND NO-OX OR EQUIVALENT PLACED BETWEEN CONNECTOR AND GROUND BAR.
- THE GROUND ELECTRODE SYSTEM SHALL CONSIST OF DRIVEN GROUND RODS UNIFORMLY SPACED AROUND CELL SITE. THE GROUND RODS SHALL BE 5/8"x8"-0" COPPER CLAD STEEL. THE RODS SHALL BE INTERCONNECTED WITH #2 SOLID TINNED COPPER GROUND WIRE BURIED A MINIMUM 4" BELOW THE SURFACE OF THE SOIL.
- ALL UNDERGROUND ELECTRODES SHALL BE BONDED TO STEEL REINFORCING EMBEDDED IN THE CONCRETE SLAB AND CONCRETE MONOPOLE FOUNDATION.
- MUST APPLY BUTYL & ELECTRICAL TAPE OVER COLD SHRINK AT ALL LOCATIONS. FOR WEATHER PROOFING OVER GROUND KITS. MORE BUTYL TAPE MAY NEED TO BE APPLIED THAN WHAT IS PROVIDED WITH THE MFR. KIT.
- TEST COMPLETED GROUND SYSTEM AND RECORD RESULTS FOR PROJECT CLOSE-OUT DOCUMENTATION.

COMPLETE
Wireless Consulting, Inc.

MST ARCHITECTS
ARCHITECTS & ENGINEERS
801 Alameda Blvd., Suite 2, Sacramento, CA 95816
Ph: (916) 841-0408 Fax: (916) 841-0408
mst@architects.com

CNU6048 - PINOLE COW
730 SAN PABLO AVENUE
PINOLE, CA 94564

at&t

ELECTRICAL & GROUNDING DETAILS

SHEET TITLE:

REGISTERED ARCHITECT
MANUEL S. TSIPAS
No. C-28021
Exp. 08-11
STATE OF CALIFORNIA

Revisions:

△	--
△	--
△	--
△	--

File: 206.003_E11.DWG
Drawn By: ALB
Checked By: MST
Scale: AS NOTED
Date: 07/23/10

Job No. 206.003

E1.1