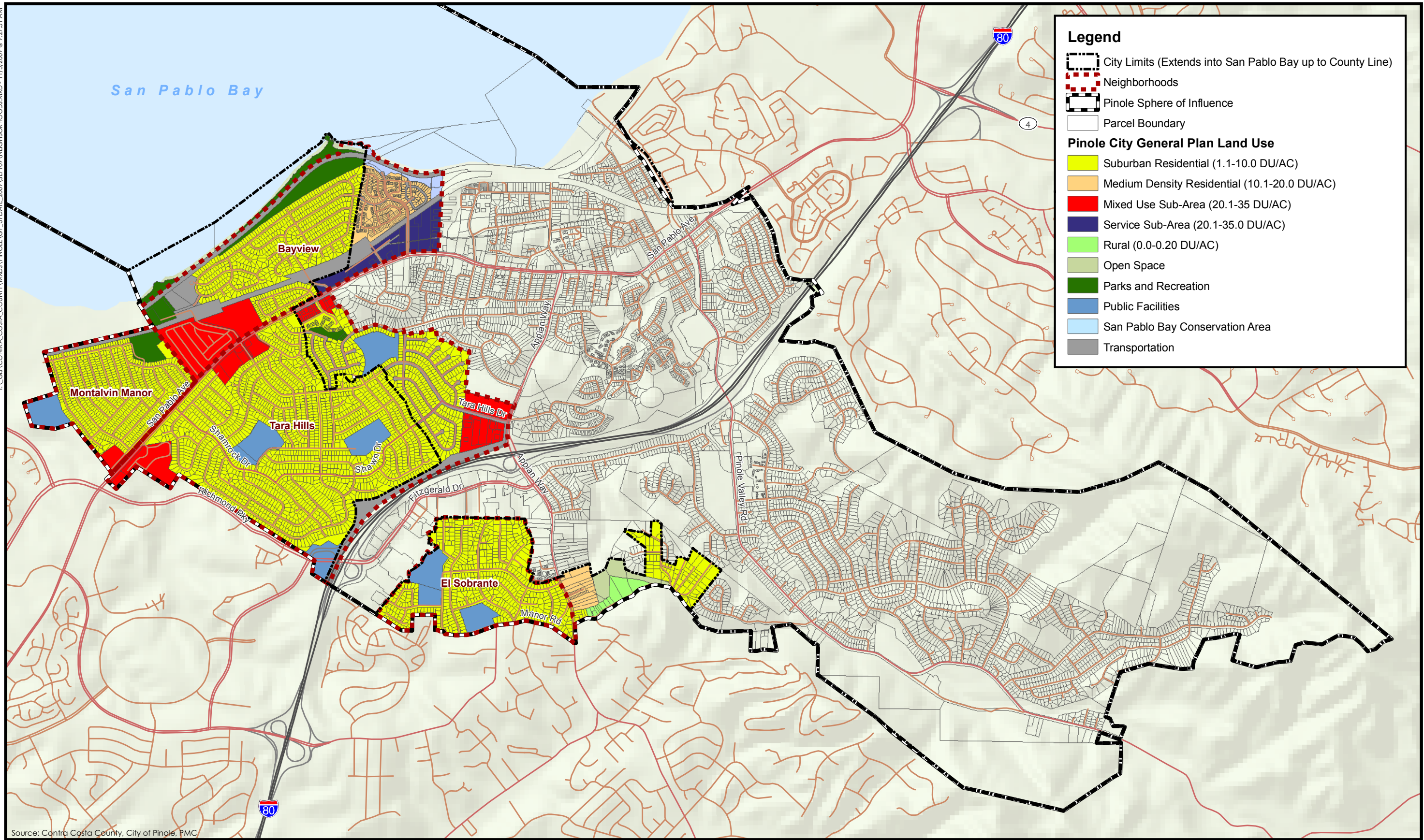


\\GIS\CONTRA\_COSTA\_COUNTY\WMS\PINOLE\GP\_UPDATE\_2009\SEPT09\NEIGHBORHOODS.MXD - 11/15/2009 @ 9:27:31 AM



**Legend**

- City Limits (Extends into San Pablo Bay up to County Line)
- Neighborhoods
- Pinole Sphere of Influence
- Parcel Boundary

**Pinole City General Plan Land Use**

- Suburban Residential (1.1-10.0 DU/AC)
- Medium Density Residential (10.1-20.0 DU/AC)
- Mixed Use Sub-Area (20.1-35 DU/AC)
- Service Sub-Area (20.1-35.0 DU/AC)
- Rural (0.0-0.20 DU/AC)
- Open Space
- Parks and Recreation
- Public Facilities
- San Pablo Bay Conservation Area
- Transportation

Source: Contra Costa County, City of Pinole, PMC



**Figure 5.3**  
Pinole Sphere of Influence Neighborhoods  
and Land Use Designations

